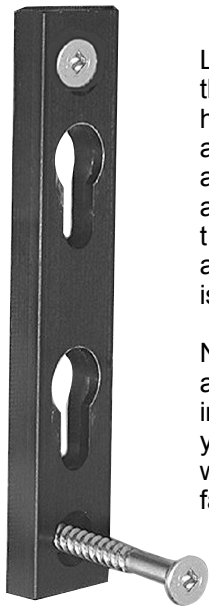


WALL PLATE



Locate the stud and mark the top hole, drill 11/64 pilot hole and insert #14 screw and tighten slightly. Using a level, mark the lower hole and drill a pilot hole, insert the second #14 screw, again checking that the unit is level.

NOTE 1: #14 Wood screws are supplied with unit. If installing onto metal studs, you will need to replace with proper metal stud fasteners.

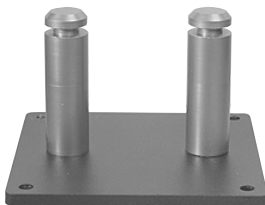
MONITOR

Using a phillips screwdriver, attach the VESA plate to the back of your LCD monitor.



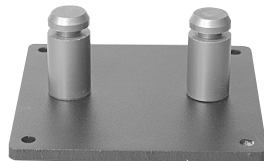
FM25

- VESA 75
- long spools



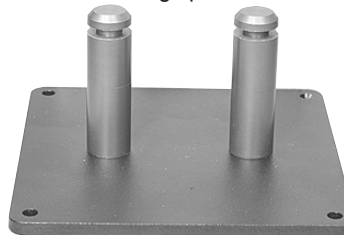
FM26

- VESA 75
- short spools



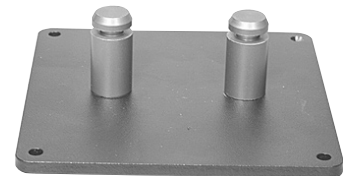
FM30

- VESA 100
- long spools



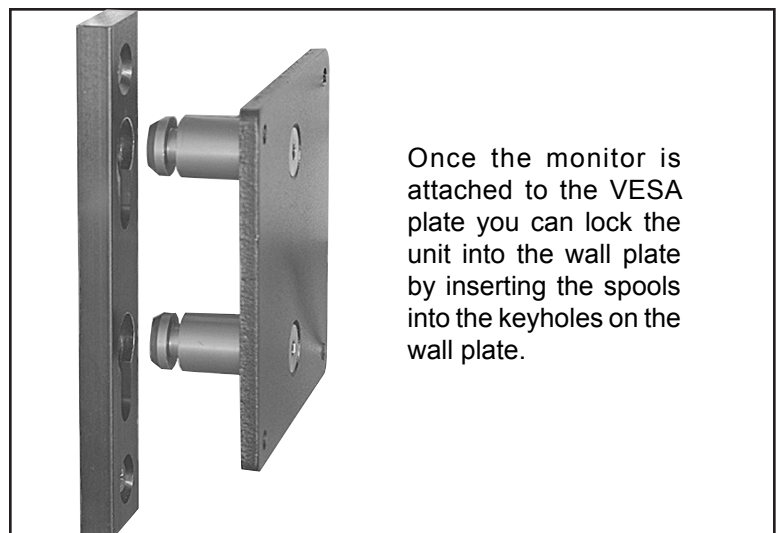
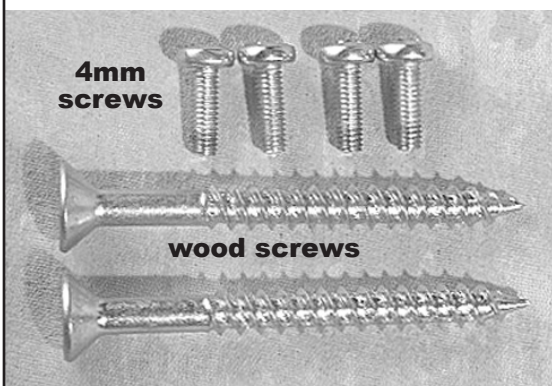
FM31

- VESA 100
- short spools



Included hardware:

- 2 wood screws
- 4 - 4mm phillips head screws



Once the monitor is attached to the VESA plate you can lock the unit into the wall plate by inserting the spools into the keyholes on the wall plate.



FM25



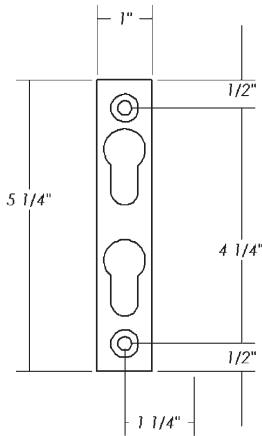
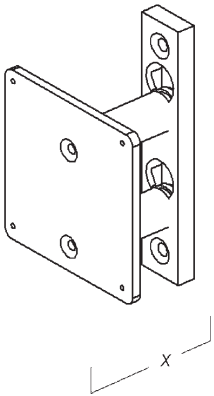
FM26



FM30



FM31

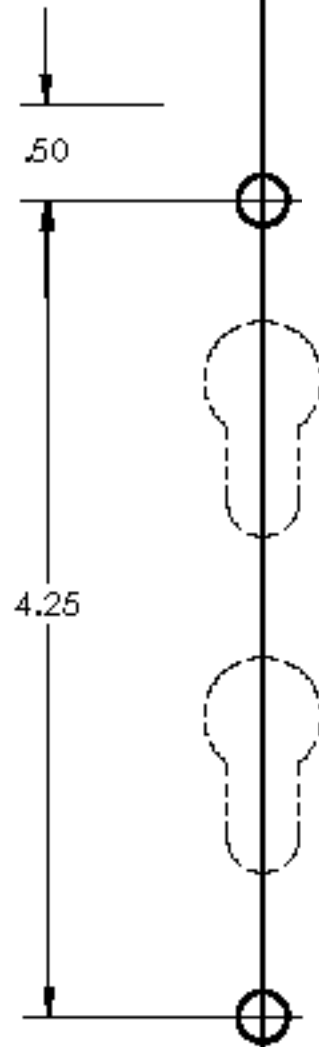



Used Extensively by Exhibitors

The FM 25 Series allows the wall plate to stay with the exhibit and the monitor to be shipped with the mounting plate attached for quick and easy on-site installation. **Also great for Kiosks** where space is at a premium and space-saving solutions are essential.



HOLE
TEMPLATE
FOR FM25
WALL
MOUNT



.50

4.25

LEVEL LINE