

# ICW "UNIVERSAL" POWER ADAPTER MOUNT INSTRUCTIONS

ICWUSA.com, Inc.

If you have any questions please call Toll Free 1-800-558-4435

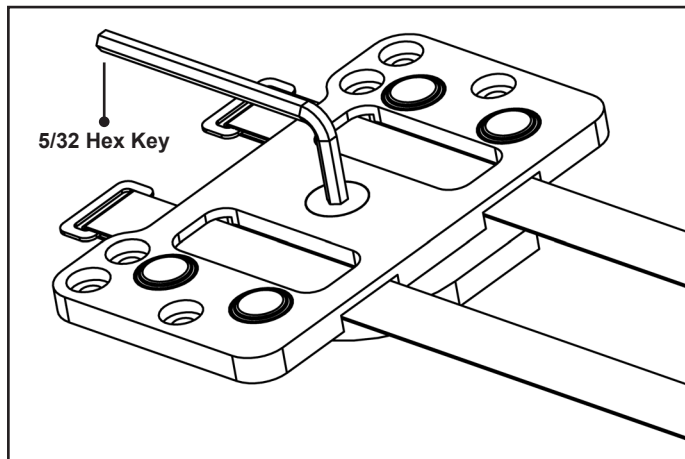
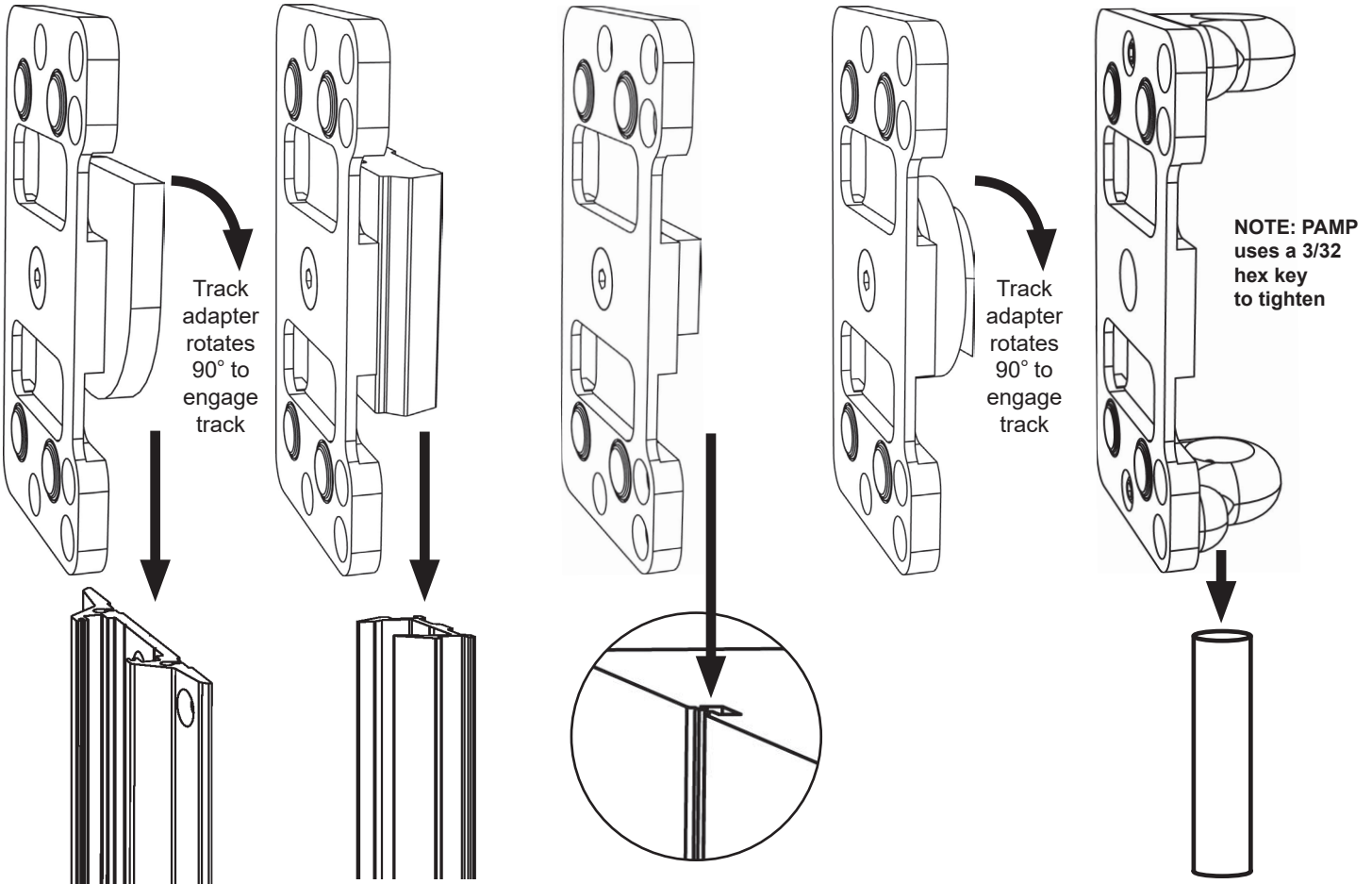
**PAM**  
For MD/Universal  
Healthcare Channel

**PAMU**  
For ICW Ultra Channel

**PAMDA**  
For Dräger Channel

**PAMDT**  
For GE Dovetail  
Channel

**PAMP**  
For 5/8" Diameter  
Rails (EV710 and  
Scanner Mounting Rails)



- 1** Slip the Power Adapter Mount (PAM) track adapter into the track grooves as shown.
- 2** Tighten mount in place. DO NOT OVERTIGHTEN.
- 3** Fasten your power adapter to the mount using two velcro straps.

NOTICE: ICWUSA.COM, Inc. provides the appropriate and or assortment of hardware fasteners to match the majority if not all standard monitors and devices. It is the responsibility of the installer / integrator to ensure that the screws and fasteners have the adequate thread engagement. A general rule of thumb is that the thread depth is greater than the diameter of the hole or 4 full turns of 360 degrees of thread engagement. It is also the responsibility of the installer / integrator to ensure that they do not damage the monitor or device by using a screw or fastener that is too long for hole and therefore damage the unit by inserting too far.