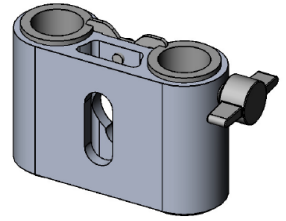


*Go to the following link to see an installation example.*

<https://youtu.be/nRVLlBj9Jvg>



1. Remove tension from the arm by turning the adjuster screw in the minus (-) direction. Assistance may be necessary (another person to hold the monitor as the tension releases).
2. Remove monitor by unscrewing Rear Knob, while holding the monitor to keep it from falling, an assistant may be helpful in this step.
3. The square washer will be loose, and will be removed as well. Be sure to save the Hand Knob, Square Washer, and Ball Vesa parts for reuse.
4. Set monitor, which is still hooked up to the Monitor Ball Vesa Mount, aside (on keyboard tray if there is one), If not you will have to disconnect the monitor cabling to set aside.
5. Take round Top Rail Block off by unscrewing the two 5/16 x 3/4 bolts using a 1/4" hex key, and set aside.
6. Slide up and remove old EV710 slider assembly, and replace with new one.
7. The Friction Lock Knob should be on the top right when facing the monitor location.
8. Re-install round top rail block and fix into place with the friction lock.
9. Reinstall monitor and tighten with Hand Knob.
10. After installed, set correct tension on arm by turning adjuster screw in the plus (+) direction
11. Adjust monitor height by loosening Hand Knob and Friction Lock. Place monitor to desired location and tighten Hand Knob and Friction Lock.