



A DIVISION OF ICWUSA.COM, Inc.

# Viewmaster Desk Stand Users Guide

Installation instructions for the Viewmaster Desk mount 30.  
II017 Revision B. 4-22-03 MF

## Step 1

### Desk top



Drill a 3/8" hole in the flat surface you are mounting to. Insert the

bolt provided through the mount and through the hole in the surface. Secure the mount by tightening the nut and washer under the table.

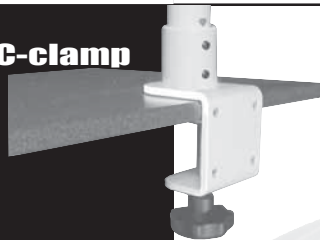
## Step 2



Loosen the set screws on the desk mount and slide the post into the mount. Tighten the set screws, securing the post into the mount.

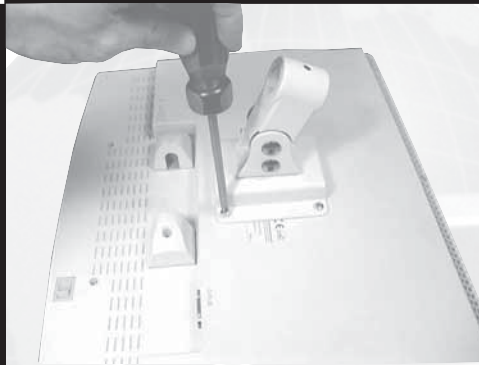


## C-clamp



Place the protective eva pad on the desk. Then slip the C-clamp mount onto the edge of the desk. Firmly tighten the clamp down.

## Step 3



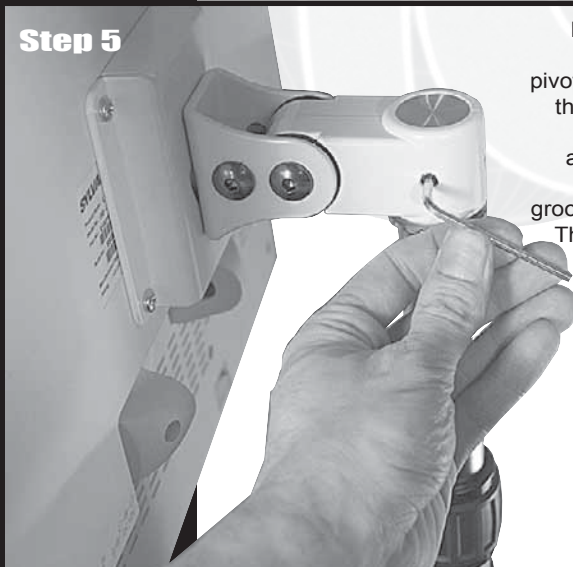
Attach the pivot unit to the back of the monitor using the four 4mm screws provided.

## Step 4

Slip the nylon ring over the mounting stub on the post.

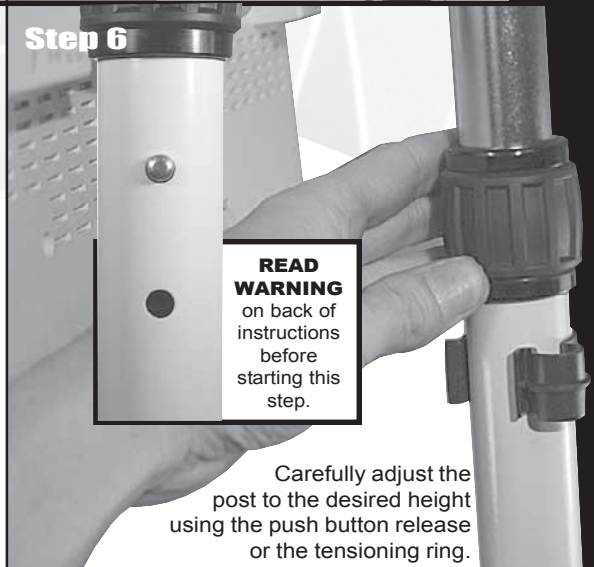


## Step 5



Loosen the set screws on the pivot unit and slide the unit over the mounting stub aligning the set screw with the groove in the stub. Then tighten the set screw.

## Step 6



**READ WARNING**  
on back of instructions before starting this step.

Carefully adjust the post to the desired height using the push button release or the tensioning ring.



Cables can be secured in clips on post.

## Warning

**This unit is spring loaded** to counter the weight of the monitor making adjusting easier when the monitor is mounted.

Use caution when adjusting and **only adjust the height when the monitor is mounted.**

